

PRODUCT RATING - TRAFFIC						
LOAD DESIGNATION	DESCRIPTION	DESIGN LOADS			TESTING	
		LIVE LB/WHEEL (2)	LIVE + IMPACT LB/WHEEL	SIDE PSF (3)	LOAD,LBS	SAFETY FACTOR
AASHTO H15	MEDIUM TRUCK TRAFFIC	12,000	15,600	N/A	27,000 (5)	2.25

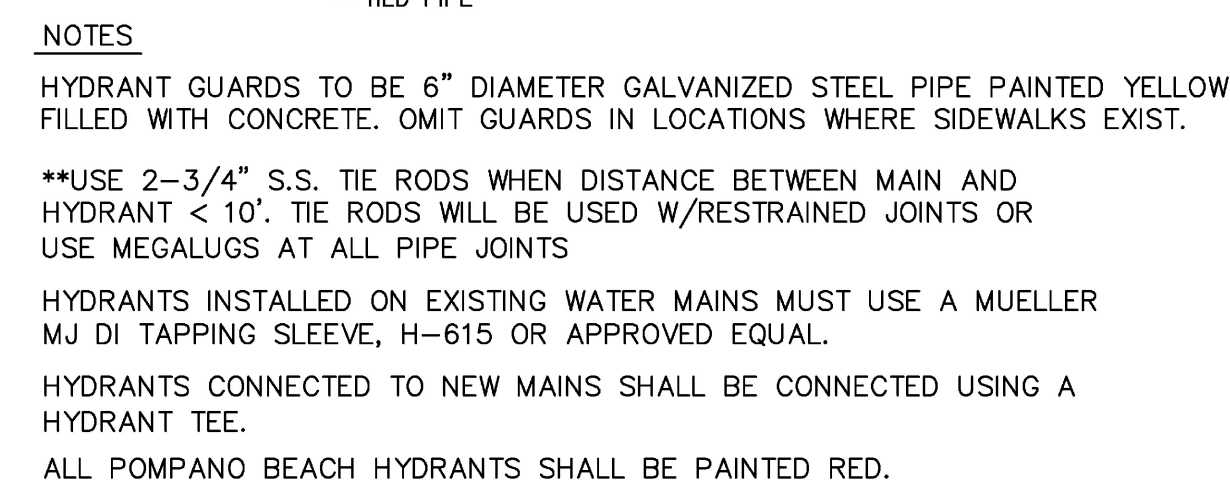
REVISONS		ENGINEERING DIVISION CITY OF POMPANO BEACH	SEWER BOX AND COVER CDR Part No. WB04-1118-12 CDR Part No. WC02-1118-02	
BY	DATE			
				DATE: JUNE 2022
				DWG. NO.
			SCALE: N.T.S.	210-2



NOTES

PLEASE NOTE THAT AS PER CITY ORDINANCE(S) 50.02(A) (4) AND 100.35(E), STREET TREES SHALL NOT BE PLACED ON TOP OF OR 5' OF EITHER SIDE OF ANY CITY OWNED UTILITY INFRASTRUCTURE. ALSO, PLEASE NOTE THAT NO TREES SHRUBBERY OR OBSTRUCTION SHALL BE PLACED WITHIN A 3' RADIUS OF A CITY OWNED LATERAL CLEANNOUT OR WATER & OR REUSE METER.

REVISONS		ENGINEERING DIVISION CITY OF POMPANO BEACH	TYPICAL SCREEN FOR UTILITIES	
BY	DATE			
TCW	APRIL 2010		APPROVED BY:	DATE: MAY 2022
				DWG. NO.
SCALE: N.T.S.		315-1		



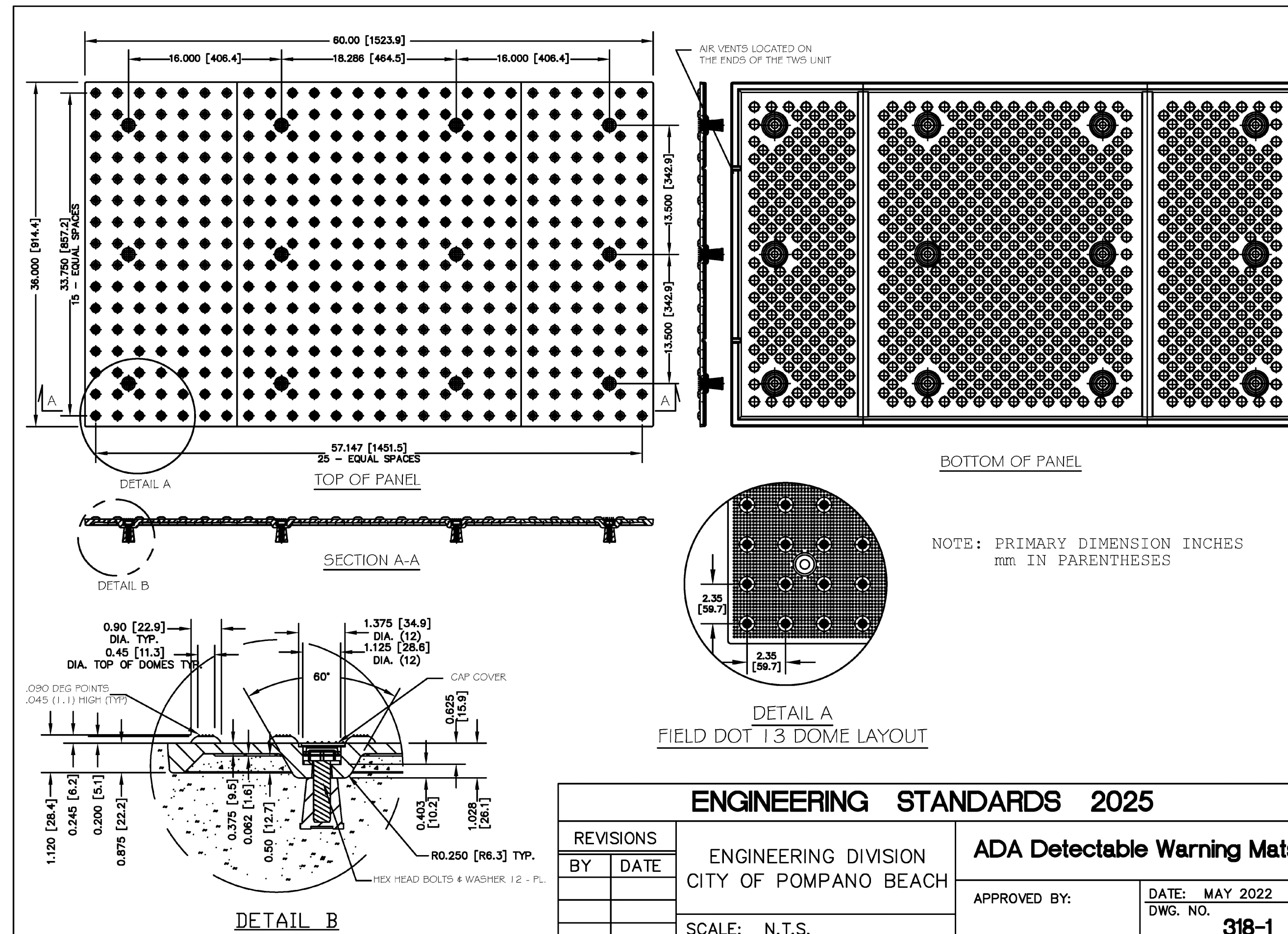
ENGINEERING STANDARDS 2025			
REVISIONS		ENGINEERING DIVISION CITY OF POMPAÑO BEACH	FIRE HYDRANT ASSEMBLY
BY	DATE		
T.W.	11-2007		
T.W.	10-2010		
S.S.	2-2012		
S.S.	11-2012	SCALE: N.T.S.	DATE: MAY 2022 DWG. NO. 109-1



NOTES

PLEASE NOTE THAT AS PER CITY ORDINANCE(S) 50.02(A) (4) AND 100.35(E), STREET TREES SHALL NOT BE PLACED ON TOP OF OR 5' OF EITHER SIDE OF ANY CITY OWNED UTILITY INFRASTRUCTURE. ALSO, PLEASE NOTE THAT NO TREES SHRUBBERY OR OBSTRUCTION SHALL BE PLACED WITHIN A 3' RADIUS OF A CITY OWNED LATERAL CLEANOUT OR WATER & OR REUSE METER.

REVISIONS		ENGINEERING DIVISION CITY OF POMPANO BEACH	REQUIRED TREE LOCATIONS	
BY	DATE		APPROVED BY:	DATE: MAY 2022
				DWG. NO.
				316-1
		SCALE: N.T.S.		



REVISIONS		ENGINEERING DIVISION CITY OF POMPANO BEACH	ADA Detectable Warning Mats	
BY	DATE			
			APPROVED BY:	DATE: MAY 2022 DWG. NO. 318-1
SCALE: N.T.S.				

THIS ITEM HAS BEEN DIGITALLY SIGNED AND SEALED BY JOSE A. COMPRES ON THE DATE INDICATED IN THE SIGNATURE. PRINTED COPIES OF THIS DOCUMENT ARE NOT CONSIDERED SIGNED AND SEALED AND THE SIGNATURE MUST BE VERIFIED ON ANY ELECTRONIC COPIES.

JOSE A COMPRES, P.E.
FLORIDA P.E. LIC. # 65557

CONEMCO ENGINEERING, INC.

PROJECT NAME / ADDRESS:
324 HAUS MIXED USE / NEW BUILDING - CIVIL PLANS
REDESIGN
324 NW 6TH STREET, POMPAÑO BEACH, FL 33060

CLIENT/OWNER:
AUSTIN FOX ARCHITECTURE
1754 E COMMERCIAL BLVD. FORT LAUDERDALE, FL 33334

REVISIONS	DATE

DATE:	9/12/2025
SCALE:	AS SHOWN
DRAWN:	FP
CHECKED:	PS
APPVD:	JC
PROJECT ID:	FPV-C251004
CONTRACT NO:	-

SHEET NAME:

MISCELLANEOUS DETAILS

DRAWING NO.

C-508

Sheet No.

18 OF 18 PZ22-12000032
02/03/2026